

# Original BMW Parts and Accessories. Installation Instructions.



## 19 Inch M Performance Sport Brake Retrofit.

Front and rear axle with lightweight perforated sport brake disks.

**BMW 5 Series (G30, G31)**

**BMW 6 Series (G32)**

**BMW 7 Series (G11, G12)**

### Retrofit kit number

34 11 2 289 348      Front and rear axle sport brake retrofit kit

Retrofit kit only suitable for approved wheels (see EPC and also section 7 for details).

### Installation time

The installation time is **approx. 3.0 hours**. This may vary depending on the condition of the car and its equipment.

The installation time shown does not include any time spent on programming/coding.

The calculation of the total costs for the programming time must be factored into the calculation of retrofitting costs (no invoicing via warranty).

### Important information

These installation instructions are primarily designed for use within the BMW dealership organisation and by authorised BMW service companies.

These installation instructions are intended for use by qualified specialist staff trained on BMW cars with the relevant expert knowledge.

All work must be completed using the latest BMW repair manuals, wiring diagrams, servicing manuals and work instructions, in a logical order, using the prescribed tools (special tools), and observing current health and safety regulations.

### If you experience installation or functional problems, restrict troubleshooting to approx. 0.5 hours for mechanical work and 1.0 hours for electrical work.

To avoid unnecessary extra work and/or costs, please send an inquiry to the technical parts support team.

Quote the following information:

- VIN,
- retrofit kit part number,
- a detailed description of the problem,
- any work already carried out.

Please do not archive the printout of these installation instructions. The current version can be found in the EPC.

## Pictograms



Denotes instructions that draw your attention to dangers.



Denotes instructions that draw your attention to special features.



Denotes the end of the instruction or other text.

## Installation information

All illustrations show LHD (left-hand drive) cars; proceed similarly on RHD (right-hand drive) cars.

## Ordering instructions

For the vehicle assignment, see the latest information in the EPC.

## Special tools required

34 1 050 Brake piston tool

## Important documents and information for the customer

The workshop certificate (see appendix) must be completed and given to the customer with customer information **G** and the separate TÜV report/parts approval (01 29 2 411 432).

Tell the customer that national acceptance and a modification of the vehicle's paperwork is required because the brake system data relevant for the approval have changed. Correct installation must be confirmed by an officially approved expert or examiner.



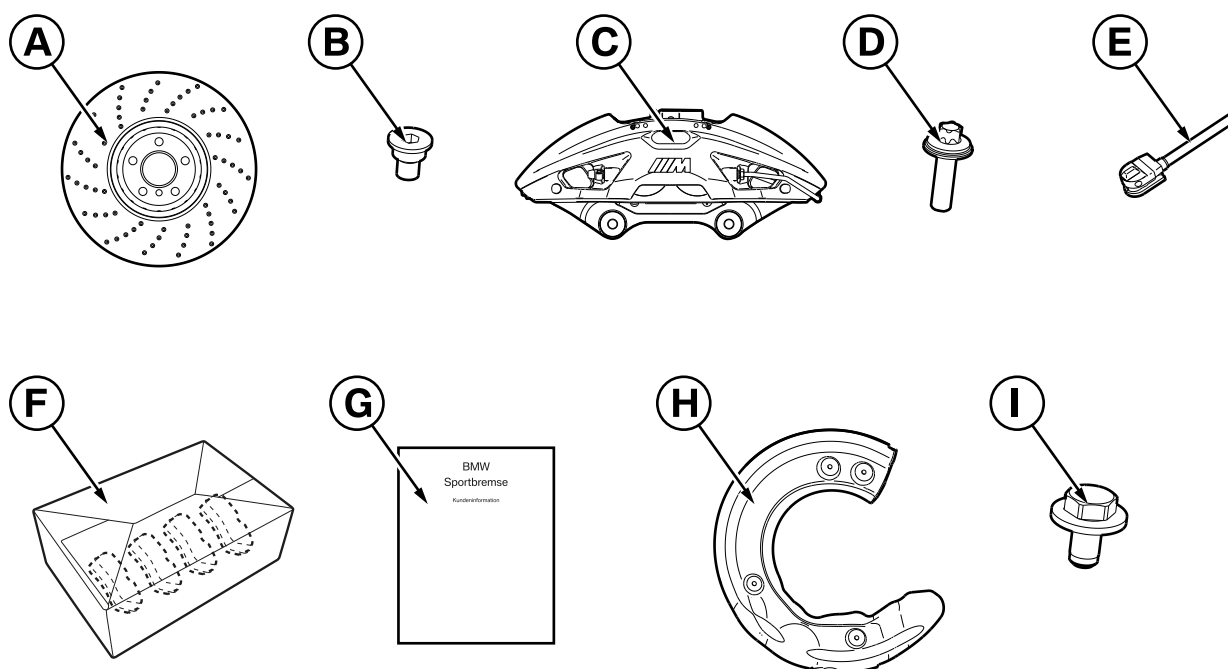
Run in the M Performance sport brake carefully for the first 200 km. After this, the full sporty characteristics of the brake system can develop. ◀

The design characteristics of the perforated brake disks mean that they may generate noise during use; however this does not affect the stability of the brake system.

Table of contents

Section	Page
1. Front axle parts list .....	4
2. Rear axle parts list .....	5
3. Preparatory work .....	6
4. Front axle installation work .....	7
5. Rear axle installation work .....	8
6. Concluding work and coding .....	9
7. Approved wheels .....	10
8. Workshop certificate .....	11

## 1. Front axle parts list



G30 0000 V

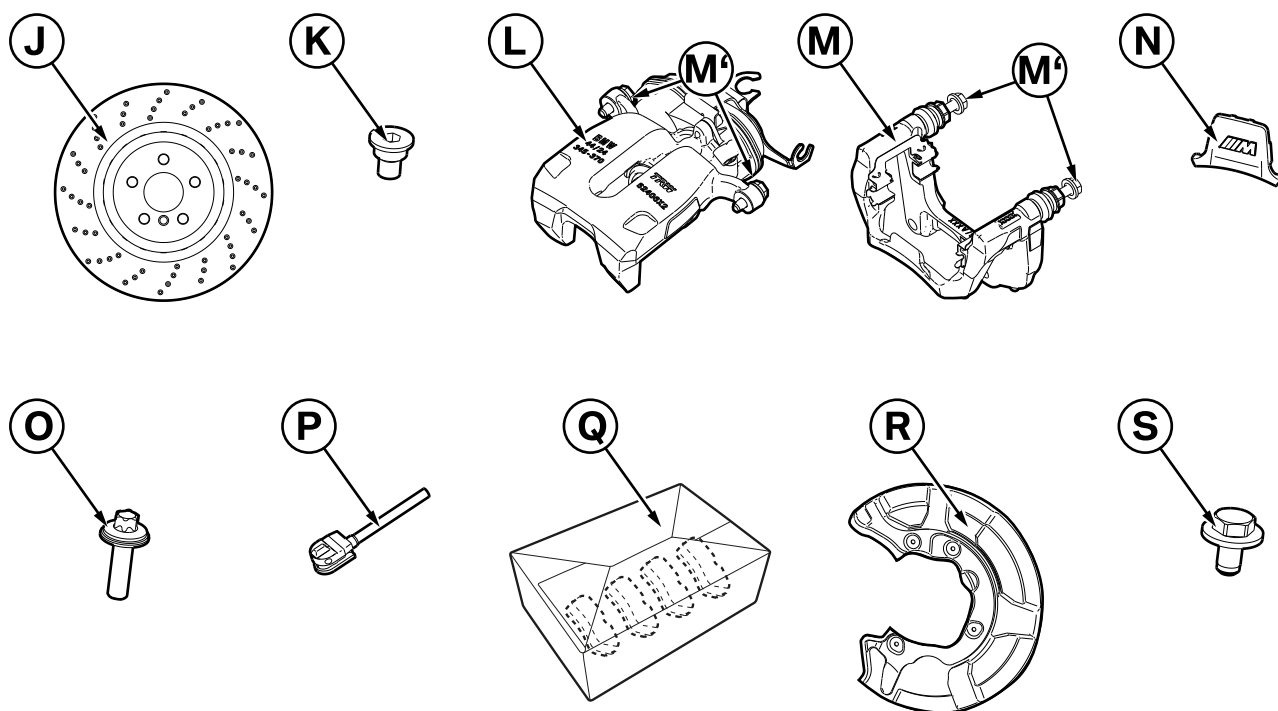
### Legend

- A** Lightweight, perforated front brake disk (2x, left/right)
- B** Hexagon socket screw for brake disk (2x)
- C** Front brake calliper (2x, left/right)
- D** Hexagon screw for brake calliper (4x)
- E** Front brake pad wear sensor
- F** Front brake pad (1 set)
- G** Customer information (01 29 2 411 431)
- H** Front brake guard plate (2x, left/right)
- I** Hexagon screw for brake guard plate (8x)



The customer information **G** must be given to the customer. ◀

## 2. Rear axle parts list



G30 0001 V

### Legend

- J** Lightweight, perforated rear brake disk (2x, left/right)
- K** Hexagon socket screw for brake disk (2x)
- L** Rear brake calliper housing, partly assembled (2x, left/right)
- M** Rear brake calliper holder, partly assembled (2x, left/right)
- M'** Guide pin screws (2x each) double quantity (both on housing and on holder) 2x are not required
- N** Rear brake calliper design clip (2x)
- O** Hexagon screw for brake calliper (4x)
- P** Rear brake pad wear sensor\*
- Q** Rear brake pad (1 set, including pad guide plates)
- R** Rear brake guard plate (2x, left/right)
- S** Hexagon screw for brake guard plate (8x)

* 2 versions included in parts kit (see EPC for installation details):			
Version	Part number	Car model	Overall length
<b>P1</b>	34 35 6 890 791	G11, G12, G30	approx. 920 mm
<b>P2</b>	34 35 6 890 792	G31, G32	approx. 869 mm

### 3. Preparatory work

	ISTA No./AIR No.
Conduct a brief test	---
Disconnect the negative battery cable	12 00 ...
<b>The following components must be removed first of all</b>	
Front and rear wheel	36 10 300
Front brake pad wear sensor	34 35 001
Front brake pad	34 11 000
Front brake calliper	34 11 519
Front brake disk	34 11 220
Front brake guard plates (for 17" and 18" brake guard plates)	34 11 250
Rear brake pad wear sensor	34 35 003
Rear brake pad	34 21 200
Rear brake calliper	34 21 745
Rear brake disk	34 21 320
Rear brake guard plate (for 17" brake low guard plates and 17" brake high guard plates)	34 21 280
Rear brake guard plate (for 18" and 19" brake guard plates)	34 21 282

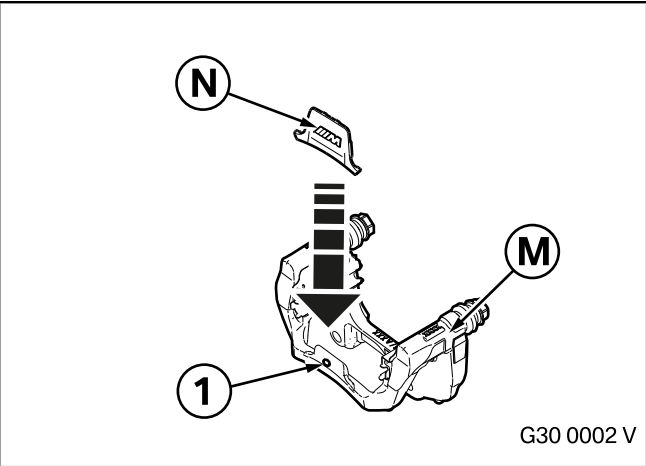
## 4. Front axle installation work

Install the following components	ISTA No./AIR No.
Front brake guard plates <b>H</b> using hexagon screws <b>I</b>	34 11 250
Lightweight front brake discs <b>A</b> using Allen bolts <b>B</b>	34 11 220
Front brake pads <b>F</b> using brake pad paste	34 11 000
Front brake callipers <b>C</b> using hexagon screws <b>D</b>	34 11 519
Front brake pad wear sensor <b>E</b>	34 35 001

5. Rear axle installation work

Install the following components	ISTA No./AIR No.
Rear brake guard plates <b>R</b> using hexagon screws <b>S</b>	34 21 282
Lightweight rear brake discs <b>J</b> using Allen bolts <b>K</b>	34 21 320
Rear brake pads <b>Q</b> using pad guide plates	34 21 200
Remove the guide pin screws <b>M'</b> from the brake calliper holder <b>M</b> (no longer required, are you ready-fitted to the brake calliper housing)	---
Install design clip <b>N</b> on brake calliper holder <b>M</b> (see figure below)	---
Rear brake calliper <b>L</b> and <b>M</b> using hexagon screws <b>O</b>	34 21 745
Rear brake pad wear sensor <b>P</b> *	34 35 003

* 2 versions included in parts kit (see EPC for installation details):			
Version	For model	Part number	Overall length
P1	G11, G12, G30	34 35 6 890 791	approx. 920 mm
P2	G31, G32	34 35 6 890 792	approx. 869 mm



Place design clip **N** on the log and ensure that the spring hooks into the borehole (1) in the brake calliper holder **M**.




## 6. Concluding work and coding


The retrofit system requires programming/coding.

- Connect the battery charger to the car.
- Connect the programming system to the car (ISTA 4).
- Select the “Retrofit Sport Brake Installation” menu point in the “Retrofit” tab.
- Calculate, accept and work through in full the action plan using the control units to be programmed/coded and any which need to be enabled.
- Refer to the rework list.
- If specified in the rework list, conduct a car test and delete the error memory.


The workshop certificate (see appendix) must be completed and given to the customer with customer information **G** and the TÜV report/parts approval.

The customer must be told that a national acceptance procedure and an amendment of the vehicle's paperwork are required because the brake system data relevant for the approval have changed. Correct installation must be confirmed by an officially approved expert or inspector.

 Important information for the customer: Run in the M Performance sport brake carefully for the first 200 km. After this, the full sporty characteristics of the brake system can develop.

 The design characteristics of the perforated brake disks mean that they may generate noise during use; however this does not affect the stability of the brake system. ◀

## 7. **Approved wheels**

 Only Original BMW alloy wheels of 19 inches or over may be used after the 19-inch M Performance sport brake has been installed. This also applies to winter wheels.

The current status of which wheels may be installed is set out in the EPC. ◀

## 8. Workshop certificate



# Workshop certificate M Performance sport brake

### Retrofit kit number

34 11 2 289 348 M Performance 19 inch red sport brake retrofit kit

The M Performance sport brake has been installed as described in Installation Instructions No. **01 29 2 411 430**.

Extract from the EC type approval, part number **01 29 2 411 432**.

'Sport brake retrofit' coding has been carried out.

Car model:

---

VIN:

---

Name and address of the vehicle keeper:

---

---

---

---

Place, date

Signature of person responsible

Dealership (company name / stamp)